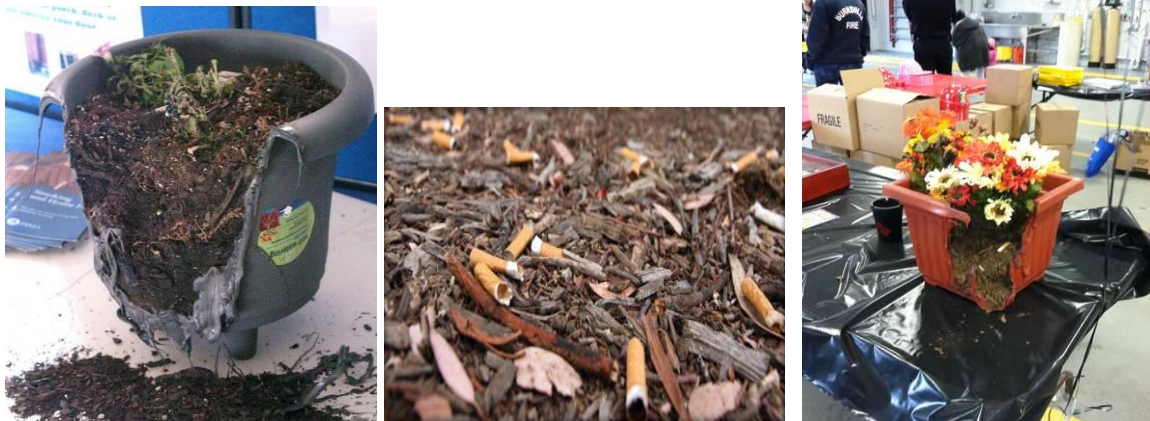


## SAFE SMOKE EXTINGUISHER RECEPTICLES



## UNSAFE SMOKE EXTINGUISHER RECEPTICLES



## Frequently Asked Questions

- Q. Why is it DANGEROUS to use a plant pot as an ashtray?
- A. Using a plant pot as an ashtray can insulate the lit smoking material instead of extinguishing it. The soil can heat to ignition temperature and begin to smolder. Smoldering can continue for hours, and when oxygen becomes available, the material can break into flames.
- Q. What should I use instead of a Plant Pot?
- A. Use a metal can with sand or a commercially made ashtray to extinguish smoking materials.
- Q. What is in potting soil mixes?
- A. Potting soil mixes on the market today contain as much or more organic material as inorganic material. Potting soil can include wood or bark chips, fertilizer, peat moss with minimal amounts of "real" soil (dirt).

*(Tips for being a Fire Safe Smoker ....)*

## Tips for being a FIRE SAFE SMOKER

- 1) Remove dead plants to lessen available potential fuel for a fire.
- 2) Keep planters well watered to minimize flammability.
- 3) Strive to keep planters away from combustible surfaces such as wood decking or siding.
- 4) Store peat moss with minimum contact to heat sources.
- 5) In the event of a plant pot fire, thoroughly wet the contents of the planter. Empty the contents onto a non-flammable surface and spread to ensure all burning substances have been extinguished. In a garden bed, use a rake or shovel to separate the burning peat and then thoroughly apply water.

### CAMROSE FIRE DEPARTMENT

201 MOUNT PLEASANT DRIVE  
CAMROSE, AB  
T4V 4B5  
780-672-2906



**PLAY IT SAFE!!**



## SMOKING & PLANTERS:

## A COMBUSTIBLE RELATIONSHIP

