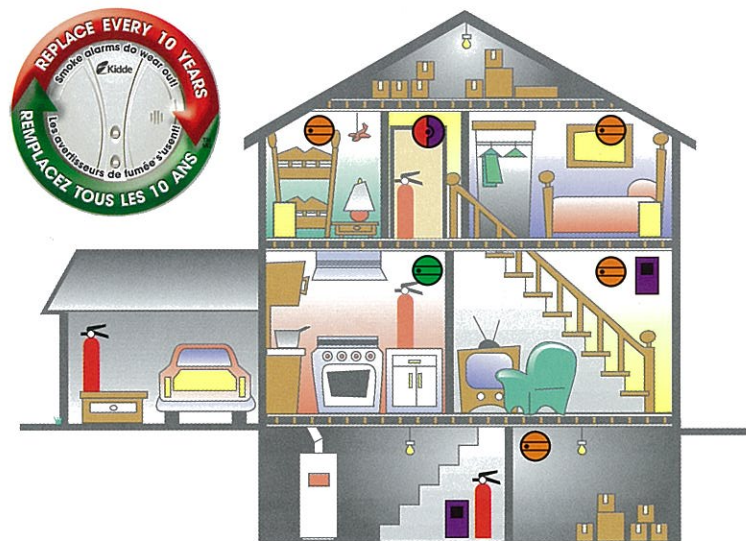


Safe at Home Report Card

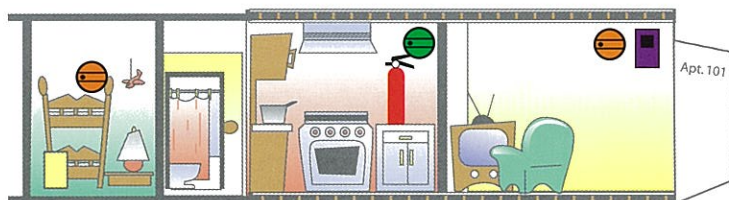
Is Your Home Safe from Fire?

Answer 'Yes' or 'No' for each statement below. Once completed, add up all your 'Yes' answers to receive a personal home fire safety grade.

House



Apartment



Legend

Suggested Safety Product	Placement	Why
Ionization Smoke Alarms	On every level and in bedrooms if sleeping with door closed	Best for detecting fast flaming fires.
Photoelectric Smoke Alarms	Best near kitchen	Best at detecting slow, smoldering fires. Less nuisance alarms in kitchen areas.
Combination Smoke/CO Alarm with Voice Alert	Ideal in hallway near sleeping areas	Protection from two dangers. Exclusive voice identification alarm eliminates confusion by voice alerting "Fire!Fire!" or "Warning Carbon Monoxide!"
Carbon Monoxide Alarm	On every level	Protection against invisible, odourless, poisonous gas. Digital readout model is ideal in order to view low levels before problem arises.
Fire Extinguishers	Garage Kitchen Each Level Car and Boat	Safe effective means of extinguishing fires. 26% of fires originate in kitchen. 23% of fires originate in garage.
Safety Ladders (2 storey)	One per Bedroom (2nd storey bedrooms)	Ensures two points of escape from each room. If stairway is blocked from fire, windows may be the safest exit route.

Fire Safety Elements	Yes	No
Kitchen		
A "BC" rated fire extinguisher is located safely within reach in the kitchen and adults know how to use it on a small contained fire only.		
Food is never left unattended on the stove, in the oven or in the microwave.		
When cooking, a proper fitting lid is kept nearby so if the pot catches fire, you can carefully slide the lid over the pot and shut off the stove.		
Living Rooms		
Homes with wood/oil burning or natural gas appliances, such as furnace, hot water heaters, fireplaces, cooking stoves, grills and kerosene heaters have at least one Carbon Monoxide (CO) alarm located near bedrooms.		
All electrical cords are in good condition, without cracks or frayed areas.		
All fireplaces are equipped with sturdy metal or glass screens.		
Bedrooms		
Smoke alarms are installed outside sleeping areas and inside bedrooms for people who sleep with door closed.		
Lit candles are never left unattended.		
An emergency escape ladder is kept in bedrooms on the second level.		
Overall Home		
At least one smoke alarm is located on every level of the home.		
You have both photoelectric and ionization smoke alarms in your home for maximum protection.		
Smoke alarms are tested at least once a month according to manufacturer's instructions.		
Smoke alarms more than 10 years old have been replaced.		
Escape Planning		
The family has prepared and practiced a home fire escape plan.		
Everyone in the home knows what to do once a fire starts and have determined who will help children and older adults.		
Everyone knows two ways out of each area of the home.		
Total		

Your Grade:

A (11 to 15 'Yes')
Well done! You are doing a great job of being prepared for a fire emergency in your home. Review your Safe at Home Report Card often and make sure everyone in your home knows exactly what to do in the event of a fire.

B (5 to 10 'Yes')
You are headed in the right direction. Make sure to correct any problems and follow the instructions above to prevent fires and be prepared for a home emergency.

C (0 to 4 'Yes')
Don't leave home fire safety to chance! Take immediate steps to improve areas of need. Purchase a smoke alarm if you do not have one. Smoke alarms are inexpensive and are required by law.

Visit www.SafeAtHomeTips.com or call 1.800.880.6788 for more information on how to properly protect your family and home from fire. Post this Safe at Home Report Card on your refrigerator and review regularly.

